



Feature -

Small dimension, Max 8 positions

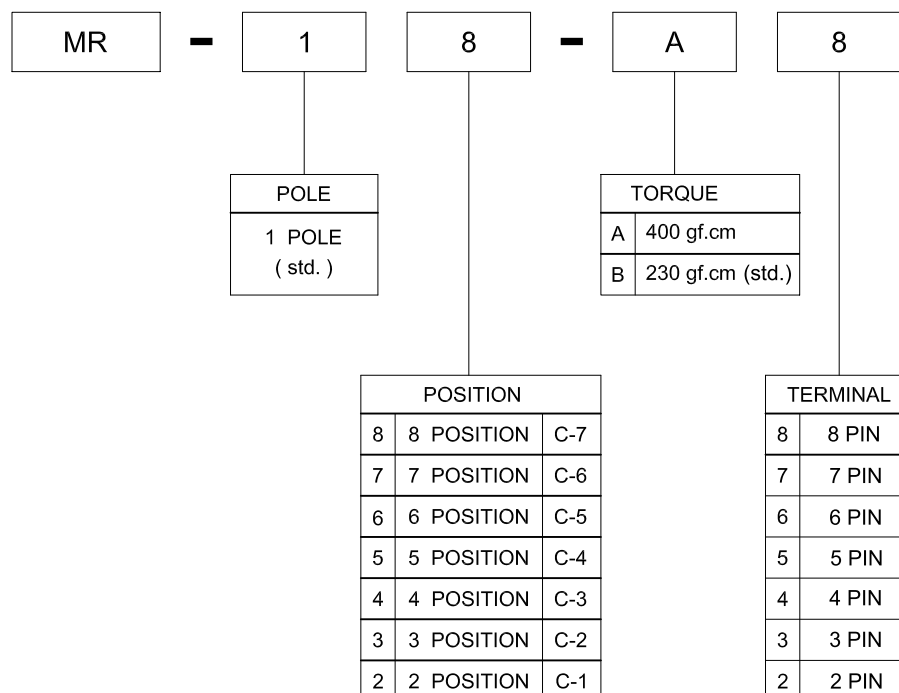
Applications -

High value toy, power strip voltage selector
Selection key on the application
AV machine, video recorder, air cleaner

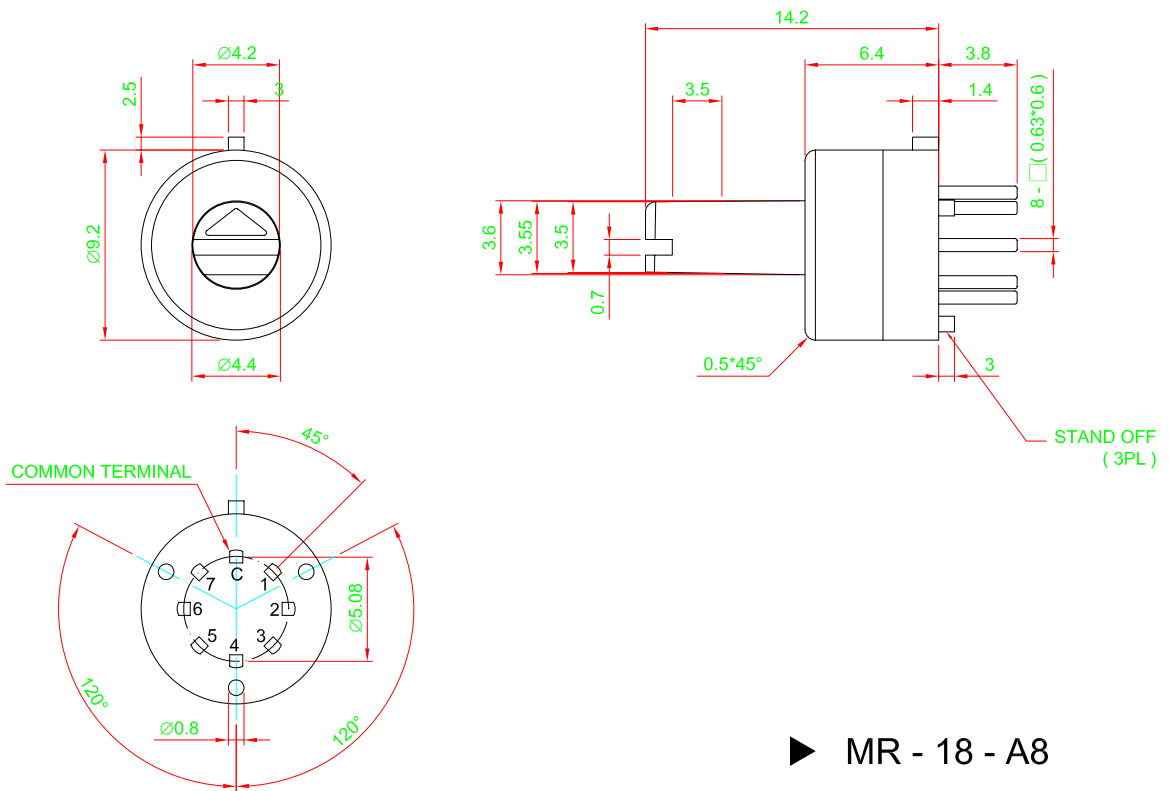
► SPECIFICATIONS

SWITCH SPECIFICATIONS	
POLE - POSITION	1POLE , 2 POSITION~8 POSITION (STOP LESS) are available
CONTACT RATING	0.5A 24V DC ; 0.2A 48V DC
CONTACT RESISTANCE	2 Ω max . 1.5 V DC ; 100 mA , by Method of Voltage DROP
INSULATION RESISTANCE	100 MΩ min . 500 V DC
DIELECTRIC STRENGTH	Breakdown is not Allowable ; 500 V AC for 1 Minute
OPERATING FORCE	180 gf . cm MIN.
OPERATING LIFE	2,000 cycles
OPERATING TEMPERATURE RANGE	-20°C ~ 70°C

► HOW TO ORDER

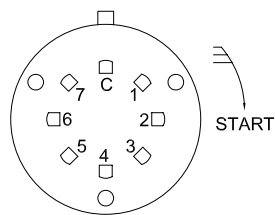


► DIMENSION

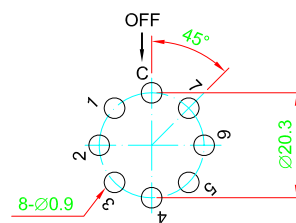


► SCHEMATIC

TRAVEL	SWITCHING POSITION
45°	C - 1
90°	C - 2
135°	C - 3
180°	C - 4
225°	C - 5
270°	C - 6
315°	C - 7



► P.C.B. LAYOUT



► UNIT WEIGHT

■ MR - 0.8 ± 0.05 g / pcs

► MATERIAL

- FRAME - PA + GF
- SHAFT - PA + GF
- TERMINAL - BRASS GOLD PLATING